



South Bay Workforce Investment Board



Annual Report 2002/2003

SBWIB BUSINESS & EMPLOYER PARTNERS

Abbott Inc.	Charles Thomas Construction	Employment Development Department
Acapulco Travel	Charo Career Center	Enterprise Rent-a-Car
Accountemps	City of Brea	Evergreen Air Center, Inc.
Ace Clearwater Enterprise	City of Costa Mesa	Express Personnel Service
ACRO Corp.	City of El Segundo	Fay tech, Inc.
ACT 1 PERSONNEL	City of Fullerton	Federal Aviation Administration
Adecco Inc.	City of Glendale	Federal Express
Adelphia Communications	City of Hawthorne	Federal Express Ground
Aerospace Corp.	City of Hermosa Beach	FileNet Corporation
Aerotek	City of Inglewood	Fox Liberty Network
Aflac	City of Lawndale	Fox Sports Net
Aguilar Engineering, Inc.	City of Lomita	Franklin Brass Manufacturing Co.
AIL Systems, Inc.	City of Los Angeles	Freeman Alternative Resource Inc.
Allied Signal	City of Manhattan Beach	Furama Hotel
Alpha-Net Consulting Group Inc.	City of Redondo Beach	Gardena Police Department
Alternative Resources Corp.	City of San Bernardino	GDE Systems, Inc.
American Broadcasting Corporation	Cleophus Oliver Learning Academy	Griffin Medical Center
American Express	Coca Cola	Guard Systems
American Protective Services	Collier-Young Agency	Hawthorne Savings FSB
American Stainless Pump	Collision Repair Center	Herbal life
Amtec Systems Amtrak	Comerica Bank	Hilton Hotel
Anaheim Hilton Towers	Construction Protective Services	Hollywood Beautification
Anaheim Memorial Hospital	Continental Data Graphic	Hometown Buffet
Anaylst International Corporation	CORE, Inc.	Honda
AON Risk Service	Corestaff	Inconen
Apple One Employment Services	Costco's	Independent Capital Management
ARC	CR England	International Rectifier
Arcata Association	CRST International Inc.	Irvine Marriott
Arrow 93 FM	Culver City	Jetway Express
Aset Corporate Undercover	Culver Staffing Resources	Jewelers Security Products, Inc.
Automobile Club of Southern California	Cyberlink	Joint Efforts Inc.
Aviant	D & D Wholesale Distributor	Kaiser Permanente
Avibank Mfg. Inc.	Daniel Freeman Hospital	Kelly Assisted Living Services
BAE Systems	Daniel's Jewelers	Kelly Services
Barker Management	Days Inn	Kentucky Fried Chicken
Bay Harbor Hospital	Del Richardson & Associates, Inc.	Kinko's
Beckman	Delta Airlines	LA County Community & Senior Services
Blaine & Associates	Department Of Corrections	L.A. County Office of Education
Body Care Chiropractic Family Center	Department of Rehabilitation	L.A. County Sheriff's Department
Boeing North America	Diagnostic Products Corp.	L.A.P.D.
Bokam Engineering	Disneyland	L3 Communications
Borg -Warmer Protective Services	Disneyland Resort	LAX Hilton Hotel
Brotman Medical Center	Diversified Staffing-Solutions	LAX Marriott Hotel
Burns International Security Services	DPI Paratransit Inc.	Learner's
California Highway Patrol	Eagle 1	Litton Enterprise Solutions
California National Guard	El Camino College	Long Beach Memorial Medical Center
CE Thomas	El Camino College BEST	
Ceycal Inc.	El Dorado Bank	
	Embassy Suites	

MESSAGE FROM THE MAYOR OF HAWTHORNE



As the Mayor of Hawthorne and representing the City Council as the Chief Elected Official for the South Bay Workforce Investment Area (SBWIA), I am committed to the support of the South Bay Workforce Investment Board (SBWIB) and the South Bay One-Stop Business and Career Centers, as they strive to reach their many goals and those of this governing body. In concert with our South Bay Cities, the SBWIB is committed to improving the economy, quality of life, maintaining our standard of living, increasing job opportunities, helping individuals reach their true potential, and preparing youth for the real world of work. As in the past the SBWIB and the South Bay One-Stop Business and Career Centers are truly committed to achieving these goals. This is exemplified by their past and current performance not just here in Hawthorne, but throughout the many cities served by the SBWIA. It can truly be said that the SBWIB, formerly the South Bay Private Industry Council, consistently provides the “state of the art” in terms of service, information, and programs as it works to assist the eight cities that make up the South Bay Workforce Investment Area, both during difficult and prosperous times.

During the past year the SBWIB has assisted the local areas in maintaining economic stability, preparing individuals for the job market, developing competitive work skills for the first time worker, assisting the experienced worker with transition and advancement opportunities, and guiding the displaced worker as they move to new arenas of work. Positive recruitment assistance for employers is one example of the many services they provide. This year the “One-Stops” assisted Lowe’s, a new business in our area, by prescreening virtually all the job seekers for Lowe’s and assisting with the actual hiring of over 120 individuals. Additionally, positive recruitments were conducted for Costco, Starbucks, and others. This is a very important service to our Cities as we strive to encourage new businesses to relocate and become part of our community, such as those along the Rosecrans corridor.

The One-Stop Business Centers Youth Program continues to develop and meet new needs. The “3rd Annual Blueprint for Workplace Success Youth Job Fair” was once again a success. More than 800 high school students attended, many of whom were able to find after-school work, summer work opportunities, or jobs upon graduation. More than 50 local businesses interviewed, accepted applications and provided realistic experiences to our future workforce. Another opportunity was made available to nearly 150 youth participating in the “Summer Youth Work Experience Program.” These students had a summer of academic enrichment activities and paid work experience, which provided them realistic opportunities to begin understanding the world of work and its requirements.

We should all be grateful and proud that the South Bay Workforce Investment Board is here to serve the cities, in the South Bay Workforce Area. This organization is part of who we are, here for all of us, and yet, another reason why our community continues to grow and improve.

FROM THE SBWIB CHAIR



As I enter my second term as Chairperson of the South Bay Workforce Investment Board (SBWIB), I find myself continually reflecting on the countless achievements of the SBWIB and its many One-Stop Business and Career Centers. So much of this is due to the continued dedication and qualification of the staff, as reflected in the success of the programs, and the praise provided by the job seekers, businesses and employers that have been served. In fact, it is because of this dedication and the assistance and opportunities that are offered to our customers and clients, that I am serving another term. It is well recognized that the staff is very knowledgeable of the job market, trends, and forecasts, and extremely successful in matching these with customer training programs, job opportunities, and ultimately successful employment. We have also been very successful in assisting numerous businesses by providing them with valuable information, staff training programs, successful staff recruitment, and many other services that add to the stability and growth of their businesses. I am so proud of being able to help so many people improve the quality of their life, help businesses grow and develop, and actively contribute to a more successful economy.

This year we celebrated our “8th Annual Alumni and Awards Breakfast”, which was attended by nearly 300 alumni, businesses, elected officials, partners and members of our community. I was honored to serve as the Master of Ceremonies, and again so proud of the opportunity to help so many people, in so many ways, and to witness the successes of those being honored. I have said before, and will say again, that I am continually impressed by the personal challenges and barriers that so many of our customers have to overcome in order to achieve their goals. What is more impressive is that so many of them do overcome these obstacles, grow as individuals, develop a new self confidence, and become self sufficient and involved members of our community.

What is so important is the variety of successful programs that we have developed over the years for the single parent, the displaced workers representing all levels of education and training, the rehabilitating adult, customers with no education, customers with a masters or a PhD, families in need, and our ever growing and specialized programs for the disabled. Of special attention is our well recognized programs for our youth. We continue to develop specialized and successful programs during school, after school, on the weekends, school breaks and summer work experiences. One of the many goals of the Youth Program is to better prepare youth, while in school, as to the requirements and responsibilities of the “work world,” before they graduate.

As chairperson, I was honored to represent the SBWIB at the National Association of Counties (NACo) Award of Excellence ceremony in San Francisco where the SBWIB received an Award of Excellence for the development of an outstanding “Qualification System.”

I am so proud to be the Chairperson of the SBWIB, because of who we are, what we stand for, and what we do for so many people and businesses.

MISSION STATEMENT

Our mission is to promote a fully integrated workforce investment policy development process, forge partnerships among economic and community development agencies, and strive for continuous improvement to meet job-seeker and employer needs.

VISION STATEMENT

The South Bay Workforce Investment Board envisions a fully integrated workforce investment system, providing the tools necessary to develop a world class workforce.

GOVERNMENT DELEGATION FROM CHINA VISITS SOUTH BAY ONE-STOP CAREER CENTERS

During September of 2002 more than 20 members of the China Human Resource Management Delegation, visiting from China, toured the South Bay One-Stop Business and Career Centers in Inglewood, a program of the South Bay Workforce Investment Board (SBWIB). Under the direction of Si Yilei, Executive Vice Chairman and Deputy Director of the China Human Resources Association, the delegates initially met with the U.S. Department of Labor, where it was recommended that the Delegates visit an outstanding Career Center, recommending the South Bay One Stop Business and Career Centers for this purpose, as it was identified as having one of the finest deliveries of services to customers and businesses in the U.S. The China delegates are responsible for monitoring and promoting recruitment and placement of potential employees, and best business practices throughout China. Delegates toured the Resource Center, visited the Teleconference Center, and observed all aspects of general daily activities, observing staff and customers.



Their tour culminated with presentations from a variety of business and community partners associated with the delivery of service, and a question and answer period, which facilitated a great deal of interest. At the completion of the delegate's tour, Si Yilei thanked Jan Vogel, Executive Director of SBWIB, and his staff, for a sensational tour and sharing of information.

"This Center is a wonderful example of what a Career Center should be, and this tour has been so very helpful. This facility and its programs are examples of what we are striving to attain in our country," stated Si Yilei.

SBWIB MEMBERS

Wayne Spencer / Chairperson
Trans American Protection

Joe Aro
South Bay Economic Development
Partnership
Brian Barklage
Turf Tech Industries
Samuel Bingham
Samuel Bingham Insurance Agency
Brenda Brent
Department of Rehabilitation
Joseph Costello
International School of Cosmetology
Fred Davis
SBC Pacific Bell
Denise DiPasquale
Federal Express
Dr. Thomas Fallo
El Camino Community College
Ben Gray
Chick-fil-A at South Bay Galleria
Martina Guilfoil
Inglewood Neighborhood Housing
Joe Harding
Hacienda Hotel
Charles Harkey
Inglewood Tickets
Bob Helfant
HCD, Incorporated
Jackie Honorè
LA Job Corps Center
Barbara Hubbard
South Bay One-Stop Business &
Career Centers, Inglewood
Yvette Johnson
Behavioral Health Services

Dr. James Lyons, Sr.
California State University,
Dominguez Hills
Yvonne Mallory
City of Gardena Economic
Development
Patrick Martinez
South Bay One-Stop Business &
Career Centers, Gardena
Simmie McDaniel
Employment Development
Department (EDD)
Glenn Mitchell
Gardena General Insurance Agency
Jackie Mizell-Burt
LA County Dept. of Public Social
Services (DPSS)
Charlie Mongelli
Vought Aircraft
Jon Montgomery
South Bay Ford
Dr. Elizabeth Nash
Southern California Regional
Occupational Center (SCROC)
Richard Navarro
Northrop-Grumman
Chris Okpala
Apex Home Health Services
Frank Oliver
Mid Valley Mgt and Development
Lorna Price
Centinela Valley Hospital

Hamid Pournamdari
City of Hawthorne
Kelly Quinn
Paper, Allied, Industrial & Energy
Workers Union
Dwight Radcliff
US Vets, Inc.
Mary Pat Renstrom
Renstrom Dispute Resolution
Services
Vijay Ronvelia
Days Inn
Tarik Ross
Los Angeles County Action Board
Dr. Pamela Short-Powell
Inglewood Unified School District
Keith Skotnes
United Auto Workers Region 5
Ray Snowden
Snowden Insurance Agency
Joe Terry
Forever Memoirs
Art Villarreal
Water & Power Federal Credit
Union
Art Waller
Inglewood Housing Authority
Beach Warren
South Bay Mortgage
Janice Webb
Citibank
Helen Wong
South Bay One-Stop Business &
Career Centers, Beach Cities
Susie Yellowhorse-Jensen
Southern California Indian
Center, Inc.

ALTERNATES

Dr. Patricia Caldwell
El Camino Community College
Shana Campbell
US Vets, Inc.
Ken Carson
Vought Aircraft
Dora Duran
South Bay One- Stop Business
& Career Centers, Gardena

Dan Elias
LA County Dept. of Public Social
Services
Dr. Margaret Gordon
California State University at
Dominguez Hills
Amy Lambert
SCROC

Jim Littrell
Northrop-Grumman
Daryn Smith
Department of Rehabilitation
Charmaine Davis-Springfield
South Bay One-Stop Business &
Career Centers, Inglewood
Tod Sword
South Bay Economic Development
Partnership

ACHIEVEMENTS

- Provided Universal Access Services to nearly 80,000 job seekers.
- Successfully placed 89% of the 536 job seekers into unsubsidized jobs earning an average wage of \$15.15. These workers were dislocated from jobs due to the terrorist activities in 2001 and served with the Project Phoenix grant.
- The Private Industry Council Aerospace Network (PAN) ended after 8 years of operation. During that time it served more than 10,000 dislocated workers with an entered employment rate of over 80% and an average earning rate at placement of \$18.13.
- In collaboration with the City of Hawthorne, hosted a Business-to-Business Trade Show, in which 56 businesses attended and were able to successfully network with other businesses and members of the community.
- Opened a children's drop-in center in the South Bay One-Stop Business and Career Center in Inglewood, which enhances the parent's ability to focus on their job seeking efforts, knowing that his/her children are being taken care of in a certified day care center.
- Hosted a delegation of the China Human Resource Management Delegation for a tour of the South Bay One-Stop Business and Career Center, Inglewood.
- Completed the installation of Level I Assistive Technology, for the disabled, in all of the South Bay One-Stop Business and Career Centers.
- Developed and received Welfare-to-Work Discretionary grant funds for *Health Care Beginnings* to partner with the County of Los Angeles Department of Public Social Services, St. Francis Medical Center in Lynwood and Robert F. Kennedy Medical Center in Hawthorne, to prepare Temporary Assistance to Needy Families (TANF) recipients for careers in the health care field through "first-exposure" community service and work experience assignments, combined with vocational training and worksite mentoring.
- Honored by the National Association of Counties (NACo), with the "Award of Workforce Excellence" for the development of an outstanding "Quality Certification System." This award was only one of seven in the U.S. and only one of two given west of Michigan.
- In conjunction with Diversity Employment Source-Department of Rehabilitation, hosted the 5th Annual Cinco de Mayo Career Expo which attracted more than 4000 job seekers and 90 potential employers.
- Assisted Washington Mutual in hiring nearly twenty high school juniors at \$8.00 per hour in its High School Intern Program (HIP) where students are trained for two years in basic workplace competencies, banking and customer service.
- Sponsored the 3rd Annual Blueprint for Workplace Success Job Fair at the Hawthorne Memorial Center with nearly 800 students and 50 employers in attendance.
- Co-sponsored the Annual Youth Business & Industry Job Shadow Day in partnership with the Inglewood/Airport Area Chamber of Commerce and the Hawthorne Chamber of Commerce with nearly 500 students and 75 employers participating.
- Provided Rapid Response to 21 companies with 2,995 affected employees.
- Achieved 90% or above on 15 out of 15 WIA Performance Standards.

SOUTH BAY ONE-STOP BUSINESS & CAREER CENTERS

The South Bay One-Stop Business and Career Centers located in the "South Bay" area of Los Angeles County provides a full range of workforce development services to the residents of the cities of Hawthorne, Inglewood, Lawndale, Redondo Beach, Hermosa Beach, Gardena, Manhattan Beach, and El Segundo.

For one-stop convenience, the Centers run as a cooperative, collaborative partnership of business, employment development, education, training, local government, and public as well as non-profit organizations that are all committed to developing job skills, abilities and attitudes that are essential for participation in today's workplace.

Nearly 80,000 customers entered the doors of the South Bay One-Stop Business and Career Centers this past year for universal access through the use of computers, access to the Internet, copiers, fax machines, typewriters and a variety of other resources for job search. Additionally, the South Bay One-Stop Business and Career Centers offer Level I Assistive Technology equipment to serve the needs of disabled jobseekers.

In its efforts to continuously improve access and service, the South Bay One-Stop Business and Career Center in Inglewood in collaboration with Children's Collective, Inc. opened a "Drop-In" Day Care Center. The addition of the "Drop In" Day Care Center, widened the opportunities for the many hopeful jobseekers who otherwise would not be able to fully participate in job search activities due to the lack of good childcare. This new service, one of the few offered in a One-Stop Center in California, allows customers the opportunity to place their children in a certified Day Care Center while participating in a Workforce Investment Act (WIA) activity.

The Centers were kept busy with positive recruitment for both Lowe's and Starbucks. Hundred of potential workers were recruited and prepared for interviews and employment in a wide spectrum of jobs at the opening of these two new businesses in the South Bay Workforce Investment Area.

The South Bay Workforce Investment Board (SBWIB) was proud to host the China Human Resource Management Delegation that toured the South Bay One-Stop Business and Career Centers, Inglewood location. The delegates initially met with the U.S. Department of Labor where it was recommended that the delegates visit an outstanding One-Stop Center such as the South Bay One-Stop Business and Career Center, Inglewood. Si Yilei, Executive Vice Chairman and Deputy Director of the China Human Resources Association stated, "This program is a wonderful example of what a Career Center should be."



Congresswoman Maxine Waters' (35th District) recent tour of the South Bay One-Stop Business and Career Center, Inglewood location.

Ed Lewis, District Manager Starbucks Coffee Company remarked, "The Inglewood One-Stop Center has been vital in the recruitment of employees of our new stores. We will continue seeking their help in the future."

WIA PERFORMANCE OUTCOMES

		Negotiated Perf. Level	Actual Perf. Level	% of Attainment
Entered Employment Rate	Adults	68.00%	85.40%	126.24%
	Dislocated Workers	69.00%	87.89%	127.38%
	Older Youth	65.00%	80.49%	120.08%
Retention Rate	Adults	73.00%	84.24%	117.51%
	Dislocated Workers	83.00%	88.78%	106.96%
	Older Youth	75.00%	84.85%	112.51%
	Younger Youth	45.00%	60.00%	136.29%
Earnings Change / Replacement in 6 months	Adults	\$3,600	\$4,982.13	152.43%
	Dislocated Workers	88.00%	80.35%	90.53%
	Older Youth	\$2,600	\$3,476.84	132.11%
Credential/Diploma Rate	Adults	50.00%	77.65%	155.30%
	Dislocated Workers	45.00%	80.91%	179.80%
	Older Youth	30.00%	69.57%	224.63%
	Younger Youth	45.00%	85.71%	190.47%
Skill Attainment Rate	Younger Youth	75.00%	92.43%	123.24%

79,147 customers were served by South Bay One-Stop Business & Career Centers from July 1, 2002-June 30, 2003, an increase of 20.2% from July 1, 2001-June 30, 2002.



Hawthorne City Councilman Pablo Catano gets some help cutting the ribbon to formally open the new Drop-In Child-Care-Center located in the Inglewood 1-Stop Business and Career Center.



Dodger Second Baseman Jolbert Cabrera and former Dodger Great Manny Mota join City Councilman Pablo Catano, SBWIB Executive Director Jan Vogel, Mayor Larry Guidi, and Councilman Gary Parsons as they support the Hawthorne-SBWIB Night at Dodger Stadium.

"With an obvious disability like mine, it is so hard to get a job. I am truly grateful to the Hawthorne One-Stop for helping me get a job at Lowe's Garden Center," said Billy Huhn, recent alumni.

YOUTH PROGRAM

South Bay One-Stop Youth Services is operated as a component of the South Bay One-Stop Business & Career Centers to provide a variety of innovative academic and employment services to youth, 14 – 21 years of age, who reside in the cities of Hawthorne, Inglewood, Lawndale and El Segundo. South Bay One-Stop Business and Career Centers Youth Services are also offered at the Gardena and Beach Cities locations. Youth Services work through collaboration with education, business, government and community partners toward a goal to “assist youth in transitioning from school to productive careers and successful lives.” We thank all of our partners for working in concert with us to achieve the following successes for South Bay youth.

Tutoring Academy - Twenty-two high school students enrolled in Centinela Valley Union High School District provided more than 90 hours each of tutoring and homework assistance in a successful pilot Tutoring Academy Program operated by Youth Services in partnership with the Lawndale Elementary School District’s Realizing Amazing Potential (RAP) After-school Program. The program will be expanded next year as, FIT FOR GOLD ACADEMY providing not only homework assistance but also age-appropriate exercise programs to youth in a variety of school and community after-school programs to help combat increases in cardio vascular disease and diabetes among youth.

Blueprint for Workplace Success Job Fair continues to break all records with over fifty (50) employers and nearly eight hundred (800) students in attendance in April 2003 at the Hawthorne Memorial Center. Now in its second year Blueprint has been recognized as a model youth pre-employment system designed to prepare youth 16 –21 years of age to be productive learners and earners in private sector employment. With declining federal funding for subsidized summer jobs, Blueprint provides a much-needed employment option for hundreds of disadvantaged youth.

Washington Mutual tops the list of employers hiring youth workers with nearly twenty (20) South Bay youth hired through Youth Services into the Washington Mutual High School Internship Program (HIP). Youth Services provide recruitment, pre-screening and referral services to six Washington Mutual branch locations in the South Bay where youth are hired and trained in customer service and banking at \$8.00 per hour.

The WIA Year-round Youth Development System achieved high ratings in exceeding all of the WIA performance measures for both younger and older youth.



Summer Youth Worker at the Commissary of the U.S. Air Force Base in El Segundo.



Summer Youth working at the Soicher Marin Fine Arts Gallery.

“My Summer Work Experience at Soicher Marin Fine Arts Gallery has been incredible. I have never worked on a real job before. Learning about what is required to be an employee is real important to me,” stated Amber Naz, summer worker.

CITY COUNCIL OF CONSORTIUM CITIES

Mayor
Hawthorne
Larry Guidi

Mayor
Hermosa Beach
Michael Keegan

Mayor
Redondo Beach
Gregory Hill

Mayor
Manhattan Beach
Jim Aldinger

Mayor Pro Tem
Pablo Catano

Mayor Pro Tem
Art Yoon

Mayor Pro Tem
Gerard Bisignano

Mayor Pro Tem
Linda Wilson

Council Members
Ginny Lambert
Gary Parsons
Louis Velez

Council Members
Sam Edgerton
J.R. Reviczky
Peter Tucker

Council Members
Chris C. Cagle
John Parson
Kurt Schmalz
Don I. Szerlip

Council Members
Joyce Fahey
Steve A. Napolitano
Mitch Ward

Mayor
El Segundo
Mike Gordon

Mayor
Lawndale
Harold Hofmann

Mayor
Gardena
Terrence "Terry" Terauchi

Mayor
Inglewood
Roosevelt Dorn

Mayor Pro Tem
Sandra Jacobs

Mayor Pro Tem
Neil K. Roth

Mayor Pro Tem
Paul K. Tanaka

Mayor Pro Tem
Curren Price, Jr.

Council Members
John Gaines
Kelly Mc Dowell
Nancy Wernick

Council Members
Nancy McKee
Jim Ramsey
Larry Rudolph

Council Members
Steven C. Bradford
Ronald Ikejiri
Oscar Medrano

Council Members
Judy Dunlap
Ralph L. Franklin
Eloy Morales, Jr.

YOUTH DEVELOPMENT COUNCIL

Chair

Martina Guilfoil
Inglewood Neighborhood Housing
Service

Dayvon Beavers
Student

Dr. Don Brann
Wiseburn School District

Don Carrington
Hawthorne School District

Dr. Joseph Condon
Lawndale School District

Dr. Thomas Fallo
El Camino College

Joe Faulkner
L.A. County Probation Dept.

Dr. Marget Gordon
Cal State Dominguez Hills

Ben Gray
Chick-fil-A at South Bay Galleria

Joe Harding

Hacienda Hotel

Jackie Honoré

Los Angeles Job Corps Center

Yvette Johnson

Behavioral Health Services

Dr. Julian Lopez

Centinel Valley UHSD

Bruce McDaniel

Lennox School District

Veldafern McElroy

Parent

Charlie Mongelli

Vought Aircraft

Dr. Elizabeth Nash

So. Cal. Regional Occupational
Center

Stephen Port

Hawthorne Chief of Police

Dr. Pamela Short-Powell

Inglewood Unified School District

Tom Quintana

Hawthorne Chamber of Commerce

Tarik Ross

Los Angeles County Action Board

Vivian Shannon

Educator

Brenda Tillis

Department of Rehabilitation

Art Waller

Inglewood City Housing Dept.

Janice Webb

Citibank

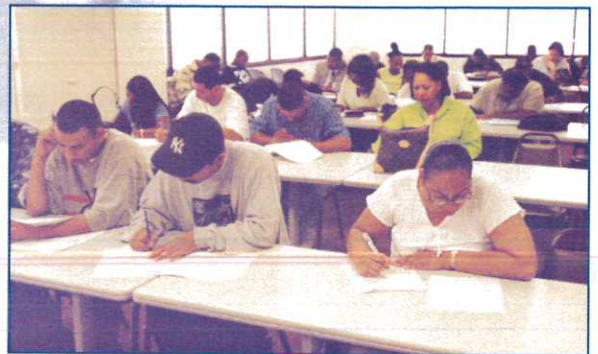
INITIATIVES TARGETING DISLOCATED WORKER POPULATIONS

As a continuation of efforts that began in 1995, the South Bay Workforce Investment Board (SBWIB) was successful in obtaining additional funding to continue re-training services to workers dislocated from the Aerospace Industry and the Commercial Airlines. The Southern California Aerospace Industry Project (SCAIP), a 25% Governor's Discretionary Grant, is a collaborative partnership between the Los Angeles County (LACWIB), Orange County (OCWIB) and South Bay Workforce Investment Boards with South Bay as the Administrator of the grant. The SCAIP grant replaces the long standing Private Industry Council Aerospace Network (PAN) that was alternately funded between 1995-2002 with State discretionary and Department of Labor Emergency grants. The PAN project served as the impetus for the Intra-State Training Resource and Information Network System (I-TRAIN) that became a model for the State's Eligible Training Provider List (ETPL) under the Workforce Investment Act of 1998. The SCAIP grant also supplements the Phoenix Project which was South Bay's response to the events of '9-11'. Project Phoenix targeted workers dislocated from major commercial airlines and airline-related industries that were adversely affected by the events of the terrorist attacks on September 11, 2001.

During a time when funds were limited, the PAN, the SCAIP, and Project Phoenix were a *god-send* for the many dislocated workers who had been affected by plant closures, down-sizing and mass layoffs. In many cases, formula allocated Dislocated Worker funds awarded to local Workforce Investment Areas were inadequate to meet the needs of dislocated workers. Since 1995, the SBWIB, through its successful efforts in securing grant funds, has facilitated job-training services for thousands of dislocated workers in the Southern California Region.



Anthony Stout Warehouse Manager for Costco interviewing a hopeful job applicant.



Some of the 1800 hopeful Costco job applicants, completing their applications.

Anthony Stout Warehouse Manager stated, "Having the One-Stop Center pre-screening all these applicants and setting up all of the interviews for us, saved us hours of time. The staff is extremely competent and capable. I will certainly use the many resources of the One-Stop again."

"I am thankful for having the opportunity to take advantage of the One-Stop Business and Career Center. I have found very good job opportunities using the services that the center provides. This would not be possible without the help from the Center staff," said Edwin Marroquin, a satisfied customer.

8TH ANNUAL ALUMNI & AWARDS BREAKFAST

The South Bay Workforce Investment Board's 8th Annual Alumni and Awards Breakfast was held on October 23, 2003 at the Hollywood Park Pavilion. Registration was at 7:30 a.m. and at 8:00 a.m. sharp the program began, with almost 300 eager guests in attendance. The theme was "Persistence: Accomplishments During Difficult Times." The "Spirit of the Day" was provided by Pastor Al Wise, from Del Aire Assembly of God in Hawthorne, during his thoughtful invocation. Wayne Spencer, Chairperson of the SBWIB Board of Directors was the "Master of Ceremonies." His amazing sense of humor and ability to "connect" with the audience, "paved the way" for a very successful event. Hawthorne Mayor Larry Guidi and SBWIB Executive Director, Jan Vogel provided opening remarks. Mayor Guidi stated, "The SBWIB and its One-Stop Business and Career Centers do so much to help so many people. They help thousands get jobs, but they also help many improve their life and find their way in this world." Ed Marin, President, Soicher Marin Fine Arts (Gallery) was the "Keynote Speaker." He spoke on Persistence, not just at work, but in everyday life. Mr. Marin commented, "If you want to succeed in work and in life, identify that primary goal, work towards it every day, and you will succeed."

Seven South Bay companies received an award for offering outstanding employment opportunities to many hopeful job seekers, and for going "that extra mile" in assisting them in obtaining their goals and becoming successfully employed. These included: Days Inn, Kentucky Fried Chicken, Starbucks, Washington Mutual Bank, Primerica, Normandie Casino, and Lowe's. Additionally, Lowe's Hawthorne won the most prestigious award, the Esther Williams' Award of Excellence. Lowe's was recognized for the many exceptional employment opportunities offered to South Bay residents, and for the numerous community activities assisting with natural disaster recovery or activities that make our community a better place to live. Fourteen Alumni who successfully completed their individualized programs at the "One Stops", were recognized for their many outstanding achievements and successes. Many of them had major obstacles to overcome, before obtaining success. Sixty two classroom and training providers were acknowledged for their performance in placing well prepared student participants in successful employment opportunities. In attendance were numerous elected officials, businesses, community leaders, and various SBWIB and "One Stop" business partners, all of whom working together create the many programs and successes honored by this annual event. A very special thank you went out to the many SBWIB and "One Stop" staff that worked so hard to make this event a resounding success.



Ed Marin, President of Soicher Marin Fine Arts (Gallery) & "Keynote Speaker," speaking to the Audience.



Jan Vogel, Executive Director of SBWIB presenting the Esther Williams' Award of Excellence to the Lowe's Hawthorne Management Team.

"I am so amazed at how much the South Bay One-Stop Business and Career Centers do for so many people. They help numerous people get jobs and serve as an important resource to local businesses," remarked Ed Marin.

SOUTH BAY ONE-STOP BUSINESS AND CAREER CENTERS LOCATIONS & STAFF

South Bay WIB Administration

11539 Hawthorne Blvd., Ste. 500
310/970-7700
www.sbwib.org

JAN VOGEL
Executive Director

PEGGY ALDRIDGE
Employment Services Manager

AKON ATE-ANYIAMOKORO

CATHERINE BLAYLOCK

STEPHANIE CAMPBELL

TRACEY CANNON

JAMES (JIMMY C) CARRADINE

FRANCISCO CARRILLO

LONNA CERTIFIED

NORMA CORNEJO

CHARLES DOUGLAS

JACQUELYN EDWARDS

JOHN FARACE

KEVIN FLEMING

ANGELICA FROMETA-VILCHEZ

TUDORITA GIULEA

SONIA GODINEZ

TAMIKA HAMBRICK

BEBE HARROLD

LATOYA HERMAN

TERRI JACKSON

NECOSIA JAMES

DEATRIA KING

SHERYL LAL

ROBERT MEJIA

DAVID NELMS

TERRI OWENS

ROSHUN PORTER

LETICIA RHODES

MARIBEL RODRIGUEZ

MACHELLE SANDERS

IMELDA SEGURA

SIDNEY SMOOT

ROSEMARIE SWEENEY

MICHAEL THREATT

VELMA WARMACK

KARMEN WHITE

TIMEISHA WINFIELD

BARBARA ROBERTS-HUBBARD
General Manager
(Hawthorne, Inglewood, Lawndale,
Westchester locations)

Inglewood Location

110 South La Brea
Inglewood, CA 90301
310/680-3700

YVONNE BENITEZ

ALISHA BOYD

RENATE BURCHARTZ

CRYSTAL BURROWS

SANDRA CUELLAR-BARRERA

CHARMAINE DAVIS-SPRINGFIELD

VERONICA GATES

ANA GAXIOLA

LISA GOODRICH

DANIEL HANSEN

SHELIA MARTIN

LYNN MC CLENDON

CORY MC KNIGHT

TAMARA STAPLETON

MARVIN WALKER

Hawthorne Location

11633 Hawthorne Blvd.,
Suite 400
Hawthorne, CA 90250
310/219-3770

LESLIE D. SHERN

Manager

ROBERT CHAVEZ

SHARON GRESHAM

RICHARD HALL

LILLY RODRIGUEZ

Westchester/El Segundo

Location

8929 South Sepulveda
Blvd.
Suite 400
Los Angeles, CA 90045
310/665-0540

DESMOND WALKER
Manager

PEGGY HARRIS

CEDRIC MC RAE

PAUL RANDERIA

Youth Services

11633 Hawthorne Blvd.,
Suite 402
Hawthorne, CA 90250
310/219-2624

Lawndale Location

14829 Hawthorne Blvd.,
Suite 200
Lawndale, CA 90260
310/412-8786

CYD SPIKES

Manager

SONYA COOPER

FURAHA GOLDEN

DAVID HALL

GABRIELA LOPEZ

VINCENTE MILES

Gardena Location

16801 South Western Avenue
Gardena, CA 90247
310/217-9579

PATRICK L. MARTINEZ
Program Director

BETH AYELE

SANDRA BOURASSA

DORA DURAN

MARIA FERRETTI

LUPE GASCA

BARBARA MILLER

LUCY TRUJILLO

RACHELLE WALLACE

Beach Cities Location

320 Knob Hill
Redondo Beach, CA 90277
310/318-0645

HELEN WONG

Program Director

THEANO FELLER

ROBIN FLANAGAN

MARIA FRIAS

EDWARD GARCIA

GEORGEANN GRIFFIS

NORMA NINO

BERTRAM RIDDICK

SUSAN RUSKOWSKI

SUSAN SANCHEZ

MARY SERCU

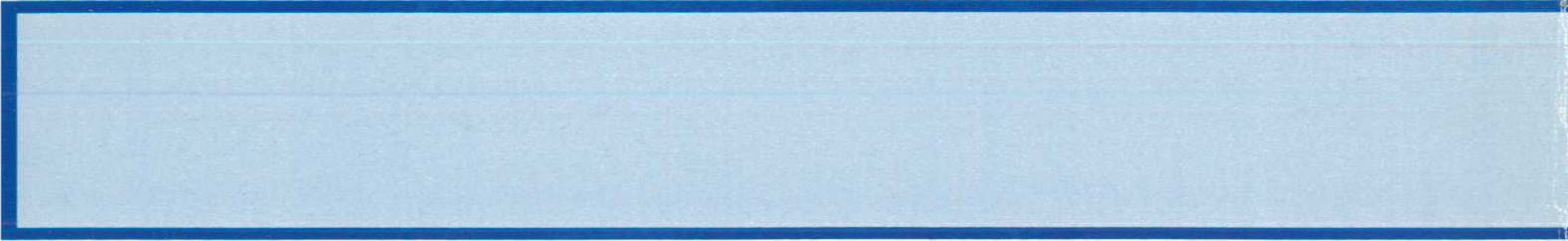
KIMBERLY SLANY

MARTY THOMAS

"The staff of the Hawthorne One-Stop was essential in the pre-screening and recruitment of the staff for our location in Hawthorne. They are very good at what they do, and we are so grateful for their involvement," stated Martin Gonzalez, Manager Lowe's store in Hawthorne.

SBWIB BUSINESS & EMPLOYER PARTNERS

Long Beach Financial Corporation	Pro Staff Personnel	The Boeing Company
Loral Electro-Optical Systems	Procter & Gamble Mfg. Co.	The Destiny Group
Los Angeles Community College	Products Engineering	The JBEST Group, Inc.
Los Angeles County	ProStaff Personnel Service	The Limited
Los Angeles County Sheriff's Department	Protocol Inc.	The Plumbers Warehouse
Los Angeles Police Department	Proud Heritage	The Ritz-Carlton Hotel
Lowe's	Qualcomm	The Waterfront Hilton Beach Resort
Lucas Aerospace Cargo Systems	QuinStar Technology Inc.	Ticket Master
Lucky Duck Swim School	Resources Transportation & Distribution	Top Gun Training
M.I.S.I. Company, LTD	Rite Aid Corporation	Toshiba Inc.
Macy's Department Store	Robert F. Kennedy Medical Center	Tracerton Enterprises Inc.
Management Recruiters of Burbank	Robinsons May	Trade System International
Manpower Technical	RPS Inc.	Tri Staff Group
Marin County	Saddleback Hospital	Triad System International
Marriott Hotels	Santa Monica College	TRW
Marriott Vacation Club International	Schnider National Connection	TSR Wireless
Marshall Electronics, Inc.	Schwaab Inc.	Tustin Personnel
Mary Perillo	Science Applications International Corporation	Ultimate Staffing & Abacus Staffing
Mattei Inc.	Sears	Ultra-Lum Inc
Maximum Technology Solutions MDTSC	Sears Carson Marketing Center	Union Bank of California
Mervyns	SER Travel Academy	Universal Pictures
Metro One	Sherwood Management	Universal Protection Service
Metric Precision	Soicher Marin Art Gallery	University of California, Los Angeles
Mikana Mfg. Co. Inc.	Sony Pictures Entertainment	University of So. California
MISI Corporation	Southern California Edison	US Coast Guard
Nordstroms	St. Francis Medical Center	USC University Hospital Inc..
Normandie Casino	St. Mary's Medical Center	VACCO Industries
Norrell Services	Starbucks	Valvoline Instant Oil Change
Nowlin Fences	State Industrial Products	Vertec, Inc.
Northrop Grumman	Suburban Medical Center	Volt Services Group
OCA Applied Optics	Supplier Quality Associates Inc.,	Waddel & Reed Inc.
Olympic Co.	T.J. Maxx	Walt Disney Consumer Products
Omni Data & Financial	TAC Entertainment Staffing	Walt Disney Pictures
Onsite Commercial Staffing	Talmo & Associates	Walt Disney Studios
Onsite Aviation	Target	Warehouse Shoe Sale
Ortel	Tech / Aid Inc.	Washington Mutual Bank
Pacific Protection Services Inc.	TECHCO / Computer Consulting	Watts Health Systems Inc.
Paramount Picture	Technical Services Operations Inc.	Wells & Associates
Parker-Hannifin	Technical Staff Connection	West Auto Body
Pasona Pacific, Inc.	Tecolocate Research, Inc.	Worktek
Peak Technical Services, Inc	The Aerospace Corporation	
Primerica Financial Services	The Body Shop	



South Bay Workforce Investment Board
11539 Hawthorne Blvd., Suite 500, Hawthorne, CA 90250
Tel 310-970-7700 Fax 310-970-7711 www.sbwib.org